



Rules Changes

2024 NFHS BASEBALL





SOUTH CAROLINA HIGH SCHOOL LEAGUE

2023-24 Rules Presentation

Charlie Wentzky

803-798-0120

charlie@schsl.org

SCHSL Rule Changes

- Change to add a sub varsity baseball time limit
Time limit will be: No new inning will start after two hours and drop-dead time of 2.5 hours for 7 inning games. For 5 inning games no new inning will start after 1.5 hours and a drop-dead time of 2 hrs.
- Sub varsity baseball is allowed an Extra Hitter (EH)
This is for offense only and player cannot move to the field or have a player who was in the field move to this role.



SCHSL Reminders

- WILSON Balls must be used in the playoffs.
- Profanity by players is on the rise
- Assistant Coaches don't get the three-step ejection process.





PLAYER COMMUNICATION EQUIPMENT RULE 1-6-1 (NEW SECTION)

ART. 1 . . . Any wristband with defensive shifts/offensive plays/pitching choices or game directions attached shall be considered non-electronic equipment and is permitted as long as it is a single, solid color. For pitchers, it may not contain the colors white, gray or be distracting. It does not have to match the color of the uniform, or the sleeves worn underneath the uniform. It shall only be worn on a player(s) wrist or forearm and pitchers shall wear it on their non-pitching arm.

PENALTY: The umpire shall issue a team warning to coach of the team involved and the next offender(s) of that team will be ejected along with the head coach.

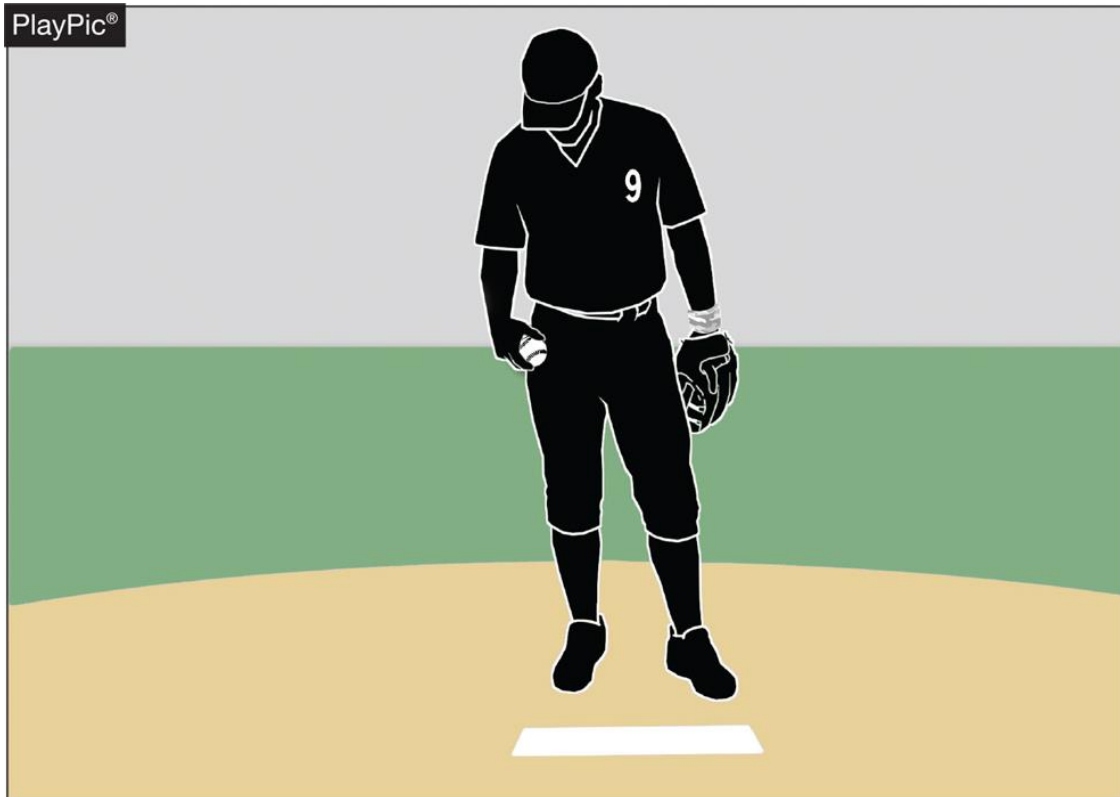
Rationale:

Clarification. With the increase in popularity of these style of communication systems, confusion has been realized when the players wear them other than on their arm. This change will prohibit these types of products from being worn other places.





1-6-1 PLAYER COMMUNICATION EQUIPMENT



- For pitchers, it may not contain the colors white, gray or be distracting.
- It does not have to match the color of the uniform, or the sleeves worn underneath the uniform.





1-6-1

PLAYER COMMUNICATION EQUIPMENT



- It shall only be worn on player(s) wrist or forearm and pitchers shall wear it on their non-pitching arm.



1-6-1 PLAYER COMMUNICATION EQUIPMENT



- The penalty for wearing this equipment improperly is a team warning to the coach on a first offense.
- The next offender of that team will be ejected along with the team's head coach.



PLAYER COMMUNICATION EQUIPMENT RULE 1-6-2 (NEW SECTION)

ART. 2 . . . One-way electronic communication devices are permissible from the dugout to the catcher while the team is on defense for the purpose of calling pitches. When using the electronic communication device, the coach cannot be outside the dugout/bench area.

PENALTY: The umpire shall issue a team warning to coach of the team involved and the next offender(s) of that team will be ejected along with the head coach.

Rationale:

This rule allows for a team to utilize an electronic device for the purpose of calling pitches from the dugout. The device would only be able to be one-way, meaning the player cannot use an electronic device to respond or communicate back to the coach. Various technologies, earpiece, electronic band or a smart watch could be used giving teams several options at varying costs. No other player would be able to wear or use this device nor would the coach be able to communicate with any other player using electronic communication.





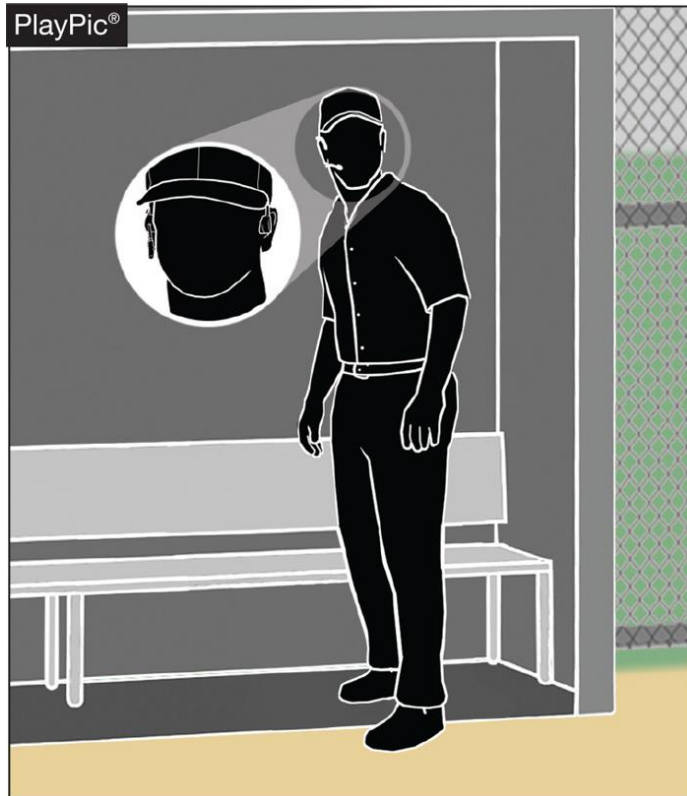
PLAYER COMMUNICATION EQUIPMENT RULE 3-2-5



- One-way electronic communication devices are permissible from the dugout to the catcher while the team is on defense for the purpose of calling pitches.



PLAYER COMMUNICATION EQUIPMENT RULE 1-6-2



- When using the electronic communication device, the coach cannot be outside the dugout/bench area.



COACHING (PLAYER COMMUNICATION EQUIPMENT) RULE 3-2-5



- Coaches may not use electronic communication device(s) to communicate with any other team member than the catcher while on defense, or any team member while on offense.





COACHING (PLAYER COMMUNICATION EQUIPMENT) RULE 3-2-5



- The penalty for improper use is a team warning on the first offense.
- The next offender of that team will be ejected, along with the team's head coach.



COACHING (PLAYER COMMUNICATION EQUIPMENT) RULE 3-2-5





COACHING RULE 3-2-5

ART. 5 . . . A coach may use a one-way electronic communication device to communicate to the catcher for the purpose of calling pitches. Coaches may not use electronic communication device(s) to communicate with any other team member while on defense or any team member while on offense. When using the electronic communication device, the coach cannot be outside the dugout/bench area.

PENALTY: The umpire shall issue a team warning to coach of the team involved and the next offender(s) of that team will be ejected along with the head coach.

Rationale:

Allows for the coach to communicate with the catcher using an electronic communication device for the purpose of calling pitches.





UMPIRE-IN-CHIEF RULE 10-2-3h

h. Forfeit the game for prescribed infractions by ~~spectators~~, coaches, players or team/bench personnel.

Rationale:

Umpires have jurisdiction over the confines of the field, players, coaches and team/bench personnel. If there are issues with spectators, it is the responsibility of game management to deal with spectators and to ensure that the facility is safe for all involved.



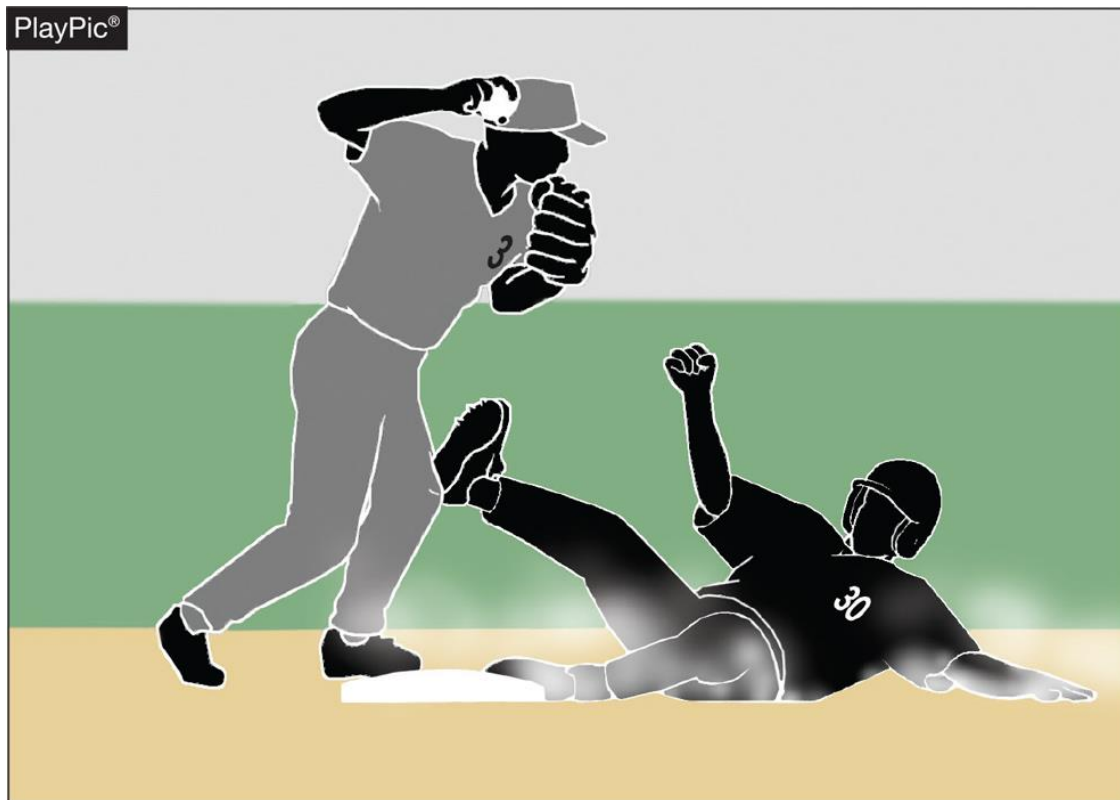


Points of Emphasis

2024 NFHS BASEBALL



MALICIOUS CONTACT



- Malicious contact can be initiated by either an offensive or defensive player(s).
- It should not be confused with incidental contact or “train wreck” plays that sometimes occur in baseball.

MALICIOUS CONTACT



- Contact or a collision is considered to be malicious if it the result of excessive force and/or there is an intent to injure.
- The absence of these two conditions does not preclude the presence of malicious contact but would provide a reasonable starting point for proper interpretation.

PROFANITY (DIRECT OR INDIRECT)



- Education-based athletics is a direct extension of the classroom.
- There is no excuse for foul language in school or on the baseball field.

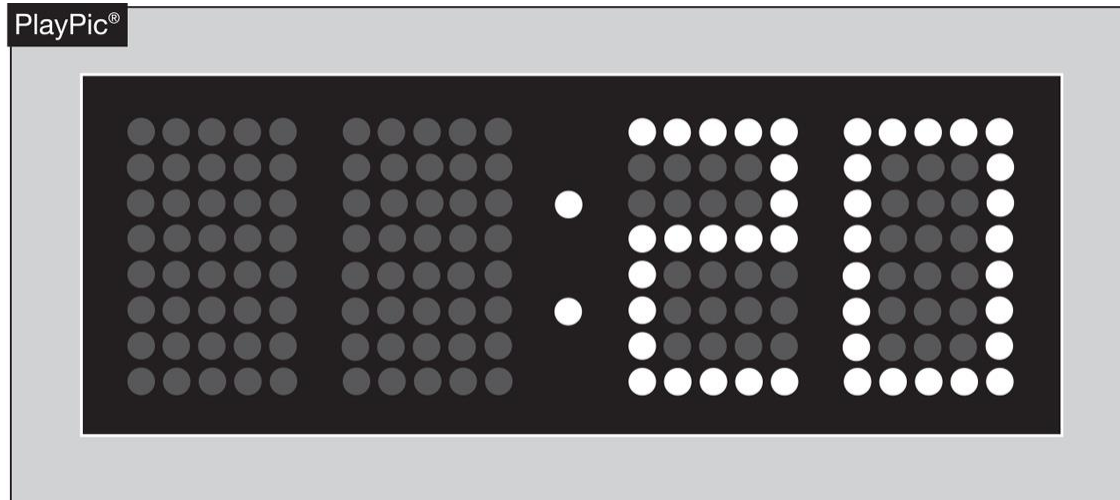
PROFANITY (DIRECT OR INDIRECT)



- The penalties range from verbal warning to ejection

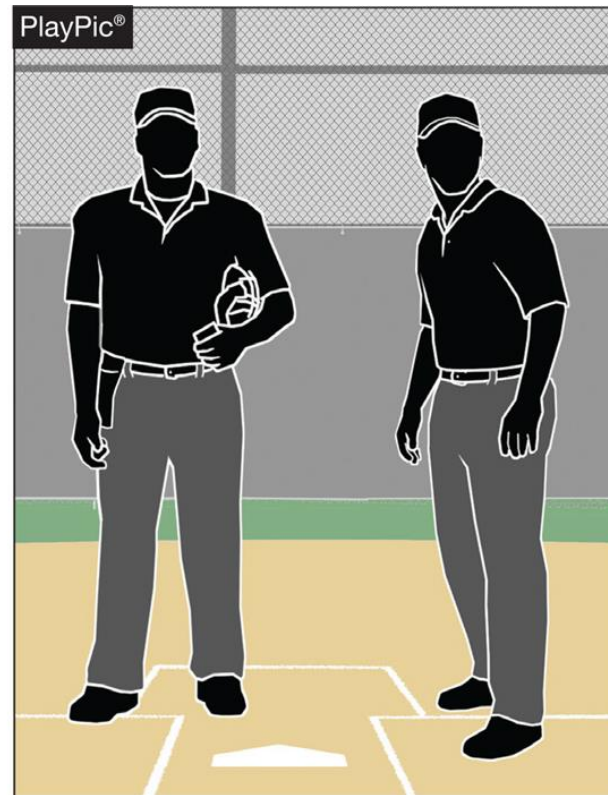


PACE OF PLAY



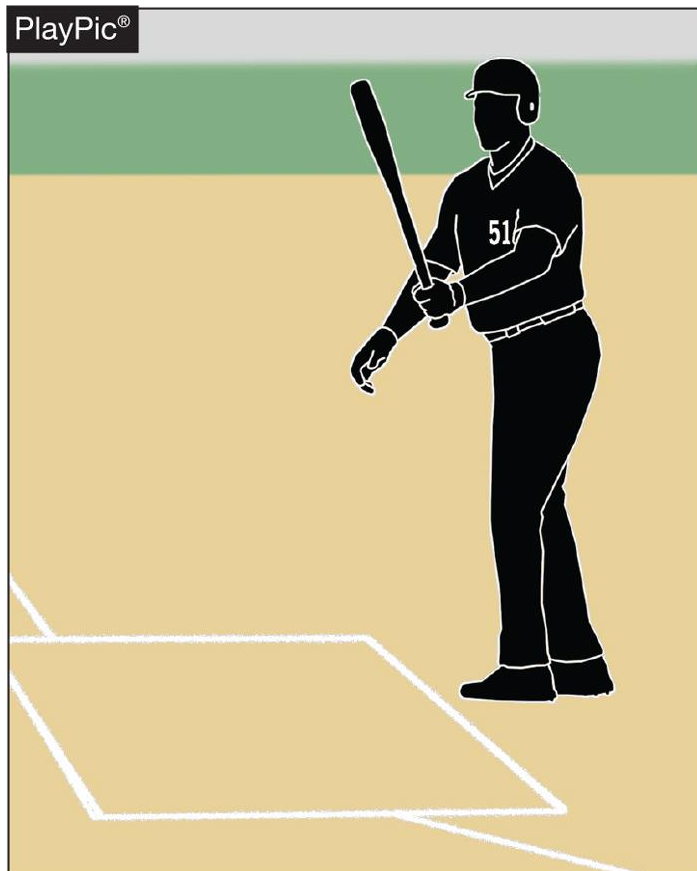
- A 20-second time limit rule has been in the NFHS rules book since the 1970s.
- The rule is meant to only be utilized when other preventive umpiring measures fail to achieve a reasonable pace or rhythm.

PACE OF PLAY



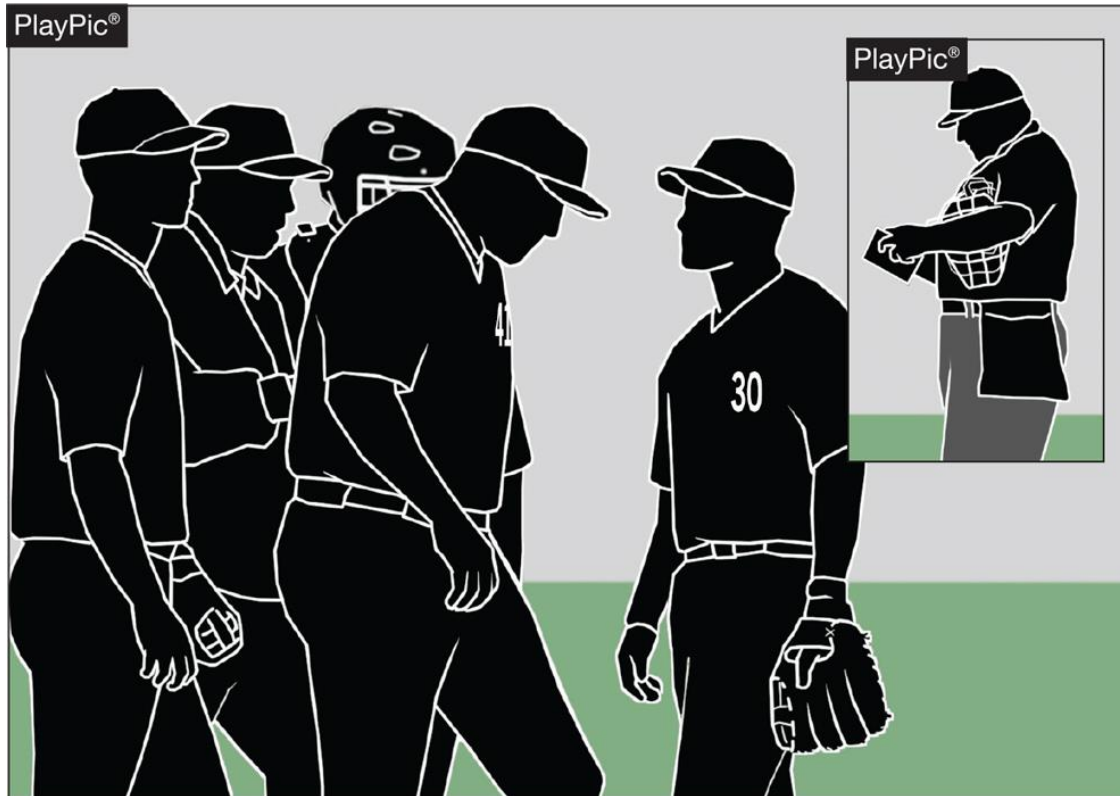
- By rule, the time between the last out of one half-inning and the first pitch of the next half-inning is 1 minute, 20 seconds.
- Umpires should facilitate this and refrain from visiting with fans or having prolonged discussions with other crew members.

PACE OF PLAY



- Rule 7-3-1 spells out the situations when a batter is allowed to leave the batter's box.
- Repeatedly stepping out to alter the rhythm of the pitcher or delay the game is not acceptable, and umpire needs to apply the proper penalty.

PACE OF PLAY



- Umpires need to be consistent in monitoring how teams get on/off the field, conferences, enforcing the batter's box rule and in other areas to create a sense of urgency during the contest.



PACE OF PLAY



- Umpires need to recognize when excessive player conferences begin to delay the game, step in and expedite the conclusion of the meeting.



THANK YOU

South Carolina High School League
803-798-0120

