



# Catawba Umpires Association

Feb 28, 2021

- 
- Welcome - Please Make Sure You Know How To Mute and Unmute Your Microphone
  - Please Stay On Mute Unless You Are Speaking
  - Numerous Items Referenced In Tonight's Meeting Are Available On Our Website. [www.CatawbaUmpires.com](http://www.CatawbaUmpires.com)
  - If You Missed Our First Meeting, Please Review The Meeting Notes On Our Web Site.
  - Questions Can Be Posted In Zoom Chat Feature Or Unmute Your Mic And Ask During The Presentation



# Catawba Umpires Association

Feb 28, 2021

---

- Agenda
  - Ejections
  - DH Rule
  - Force Play Slide Rule
  - New NOCSAE Requirements
  - Pitching Positions
  - CUA Reminders
  - Questions/Comments



# Catawba Umpires Association

Feb 28, 2021

## Ejections - Athletes

- Can remain in the bench area – Cannot return to play
- Immediately ineligible – Until cleared by the SCHSL (Served Suspension)
- Minimums:
  - 1 game suspension – Football, Swim, Lacrosse and Cheer
  - 2 game suspension – Golf, Volleyball and Wrestling
  - 3 game suspension – Basketball, Baseball, Softball, Tennis and Soccer **\*NEW\***
- Ejections served at the level the ejection occurs
- 2<sup>nd</sup> ejection in the same sport = 2 week suspension
- Playoffs = Minimum Next Game Suspension - **\*NEW\***



SOUTH CAROLINA HIGH SCHOOL LEAGUE



# Catawba Umpires Association

Feb 28, 2021

## Ejections - Coaches

- Must leave facility/stadium immediately and not return
- Cannot return to coach at any level until cleared by SCHSL
- Minimum 2 Game Suspension and \$300 Fine. **\*NEW\***
- Suspensions Must be served at the level where the ejection occurs
- Ejected from final game of season = Minimum \$500 Fine



**SOUTH CAROLINA HIGH SCHOOL LEAGUE**



# Catawba Umpires Association

Feb 28, 2021

## Designated hitter Rule 3-1-4b

NO.	PLAYER	RE	POS.
14	1 Abel		7
9	2 Baker		4
12	3 Charles		8
44	4 Daniels		3/DH
32	5 Edwards		6
17	6 Franklin		2

- The starting designated hitter (DH) may now be any one of the starting defensive players, including the pitcher.
- A Player/DH then holds two positions: defensive player and designated hitter.



# Catawba Umpires Association

Feb 28, 2021

## Designated hitter Rule 3-1-4b

NO.	SUB.	NAME	POS.
44	4	Daniels	8
32	5	<del>Jackson</del> Edwards	3/DH
17	6	Franklin	6
24	7	George	2
2	8	Hamilton	9
19	9	Irwin	5
10			1
SUBSTITUTES			
6		<del>Jackson</del>	
11		Knutson	
28		Larson	
35		M...	

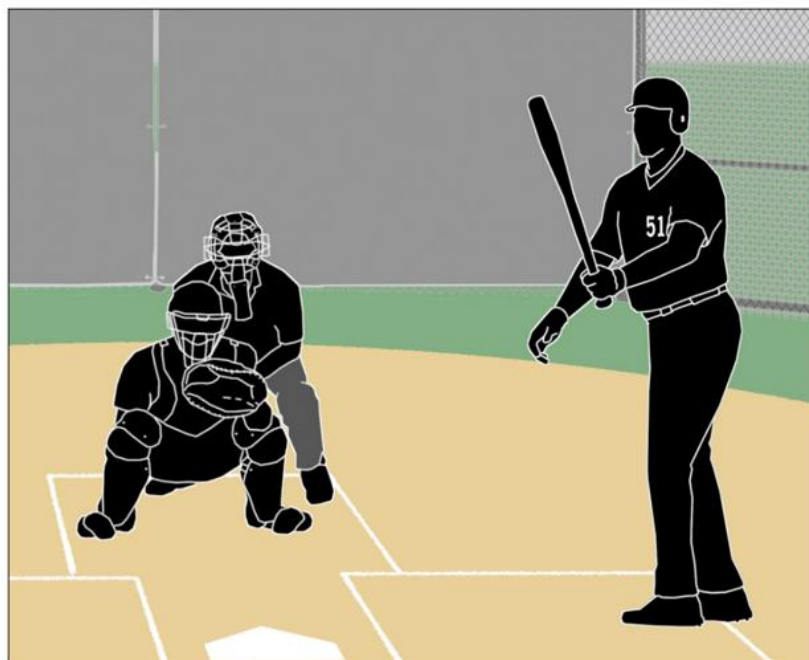
- In the case where one player is listed as a starting DH and a starting defensive player in the lineup, the role of the defensive player may be substituted for by any legal substitute.
- The original player/DH may re-enter defensively one time.



# Catawba Umpires Association

Feb 28, 2021

## Designated hitter Rule 3-1-4b-1



When using the P/DH, the role of the DH is terminated for the remainder of the game when any player substitutes offensively for the DH.



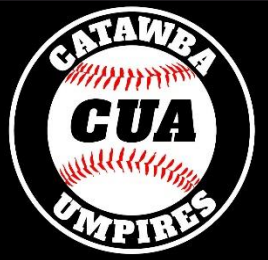
# Catawba Umpires Association

Feb 28, 2021

## Designated hitter Rule 3-1-4b-2



As a reminder from the previous rule, the role of the DH is terminated for the remainder of the game when the starting defensive Player/DH is substituted for either as a hitter or a runner.



# Catawba Umpires Association

Feb 28, 2021

## Designated Hitter (DH)

### Rule 3-1-4

- **ART. 4 . . .** A hitter may be (not mandatory) designated for any one starting player (not just pitchers) and all subsequent substitutes for that player in the game. ~~A starting defensive player cannot be listed as the designated hitter in the startup.~~ A designated hitter for said player shall be selected prior to the start of the game, and his name shall be included on the lineup cards presented to the umpire-in-chief and to the official scorer.



# Catawba Umpires Association

Feb 28, 2021

## Designated Hitter (DH) Rule 3-1-4

- **Rationale:**

This rule change will provide coaches some options to strategize how to keep their better players in the game, to contribute to the offensive output of the team and give another player a chance to participate on defense. In addition, considering the pitch count rules, this change would help pitchers to keep their bat (because they are typically the best hitter) in the game, but can come out of the game to protect their arms from overuse.



# Catawba Umpires Association

Feb 28, 2021

## Courtesy Runner

- If the pre-determined P/DH is used a courtesy runner cannot be used for the pitcher in this line-up.



# Catawba Umpires Association

Feb 28, 2021

## 3-1-4 – Subbing for the Player/DH

### Example 1:

Smith is listed as the 2B/DH on the line-up card

After four innings you decided to insert Jones in at 2B for defense and Smith now becomes the DH.

### Example 2:

White is listed as the P/DH on the line-up card.

After 2 1/3 innings pitched, you make a Pitching Change

Jones Comes in to P and White goes to DH



# Catawba Umpires Association

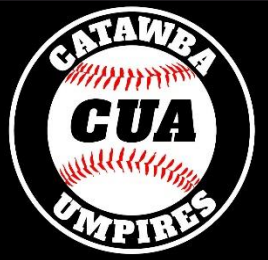
Feb 28, 2021

## 3-1-4 – Subbing for the Player/DH

### Example 3

Williams is listed as the P/DH. After 4 innings at P, you decided to bring Sullivan in to P, but you send Williams to 3B. In this case, Sullivan enters the game as a sub for Thompson who was the 3B.

After the 5<sup>th</sup> inning and two errors, you put Stone in at 3B – Williams is now the DH.



# Catawba Umpires Association

Feb 28, 2021

## 3-1-4 – Subbing for the Player/DH

Once you sub for the DH, you loose the DH position

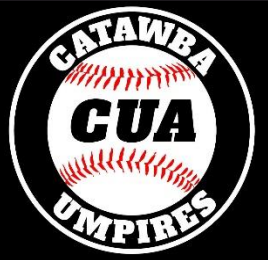
### Example 1:

White is listed as the P/DH on the line-up card.

After 2 1/3 innings pitched, you make a Pitching Change

Jones Comes in to P and White comes out of the game altogether.

Jones now hits in Whites spot. White can re-enter, but not as a DH. The DH is done.



# Catawba Umpires Association

Feb 28, 2021

## 3-1-4 – Subbing for the Player/DH

- Once you sub for the DH, you loose the DH position

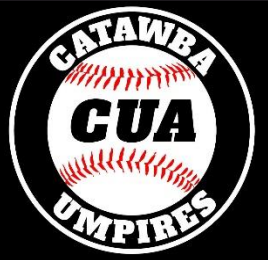
### Example 2:

Jones is listed as the P/DH on the line-up card.

After 4 1/3 innings pitched, you make a Pitching Change

Smith Comes in to P and Jones stays in as the DH.

After Jones hits a leadoff double in the 6<sup>th</sup>, you pinch run Perry for Jones. When Perry comes in, he does so for both Jones and Smith (who is still pitching). The DH is dead and only Jones can re-enter in that spot of the line-up, but not as the DH.



# Catawba Umpires Association

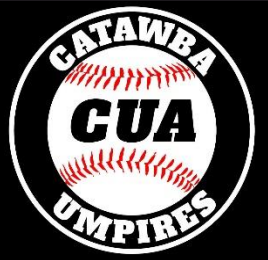
Feb 28, 2021

## 3-1-4 – Subbing for the Player/DH

Once you sub for the DH, you loose the DH position

### Example 3:

- Green is listed on the line-up as the RF/DH
- He Strikes out his first two at-bats.
- In the 5<sup>th</sup>, you decided to enter Holland in to hit for Green and play defense in RF. Holland is now the RF and hitting in Greens spot. The DH option is now dead



# Catawba Umpires Association

Feb 28, 2021

## Points of Emphasis



# Catawba Umpires Association

Feb 28, 2021

## Designated hitter



The courtesy runner (CR) can never have any function with a designated hitter (DH). When a DH comes to bat, he is a DH (regardless of either lineup option); when at bat, he can never assume a defensive position. As a result, a CR is never a legal substitute for a DH.



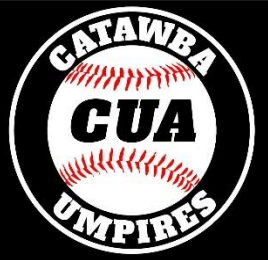
# Catawba Umpires Association

Feb 28, 2021

## Force-play slide rule



Runners are never required to slide, but if a runner elects to slide at any base, it must be legal. A legal slide can either be feet first or head first. If a runner slides feet first, at least one leg and buttock shall be on the ground.



# Catawba Umpires Association

Feb 28, 2021

## Force-play slide rule



Runners may not pop-up  
into the fielder.



# Catawba Umpires Association

Feb 28, 2021

## Force-play slide rule



Runners may not have a leg raised higher than the fielder's knee.



# Catawba Umpires Association

Feb 28, 2021

## Force-play slide rule



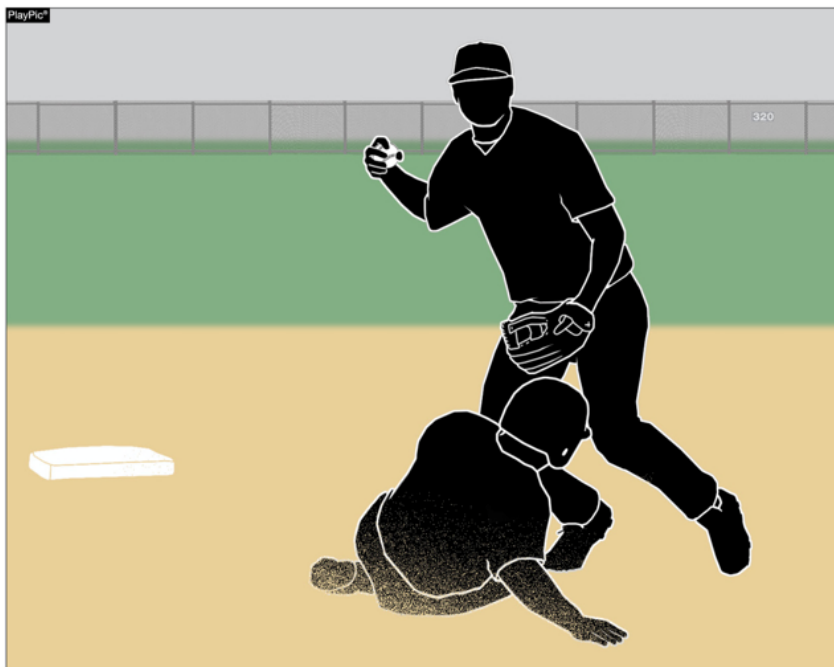
Except at home plate, runners may not slide through or beyond the base.



# Catawba Umpires Association

Feb 28, 2021

## Force-play slide rule



Runners may not slide away from a base in the direction of the fielder. But a runner may slide in a direction away from a fielder to avoid making contact or altering the play of the fielder.



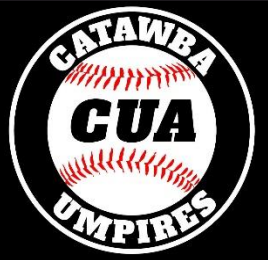
# Catawba Umpires Association

Feb 28, 2021

## Force-play slide rule



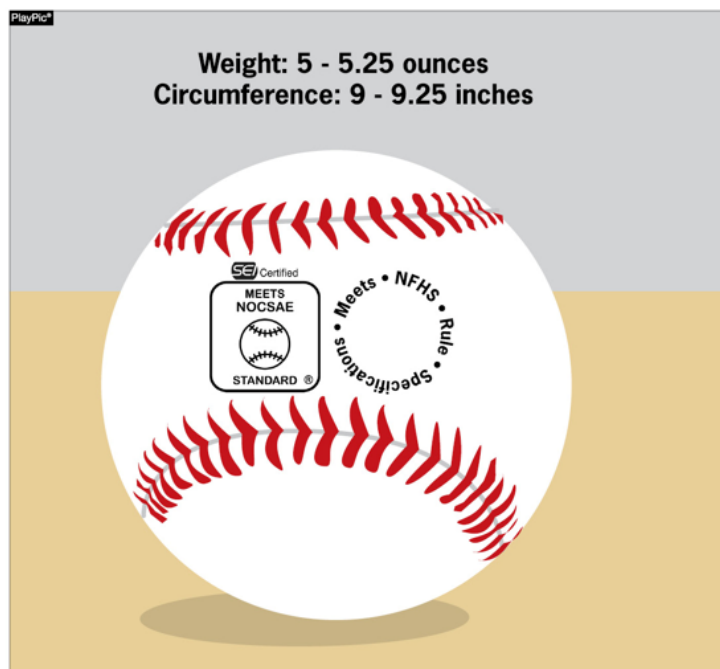
The runner is out when he illegally slides. On a force play, the runner is also guilty of interference. The batter-runner is also declared out and all other runners must return to the base occupied at the time of the pitch.



# Catawba Umpires Association

Feb 28, 2021

## COMPLIANT BASEBALL



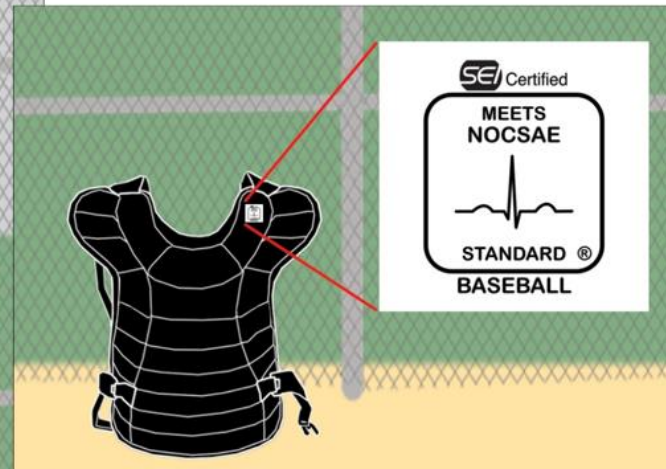
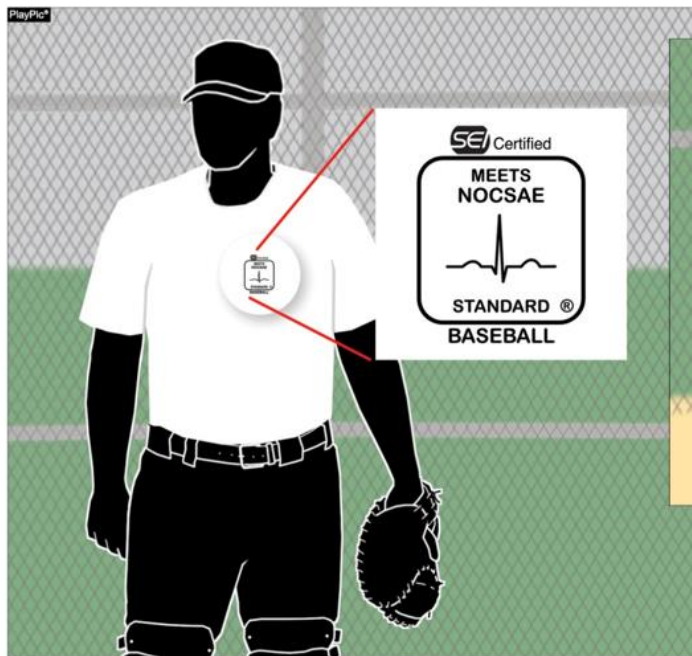
The ball shall meet the current NOCSAE standard for baseball effective January 1, 2020. The NFHS authentication mark and the NOCSAE mark shall both be visible on the ball.



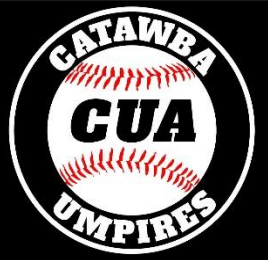
# Catawba Umpires Association

Feb 28, 2021

## COMPLIANT BODY AND CHEST PROTECTOR



The catcher's body/chest protector shall meet the NOCSAE standard effective Jan. 1, 2020.



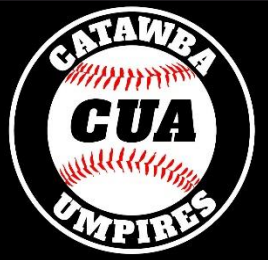
# Catawba Umpires Association

Feb 28, 2021

We recently identified that a NOCSAE certified chest pad that protects the heart and the cardiac silhouette is being offered by chest protector manufacturers to fit on top of an existing non-NOCSAE approved chest protector making the chest protector compliant with our rules. This pad meets the criteria of our NFHS Baseball Rule 1-5-3. Coaches are responsible for knowing if their catcher's chest/body protector equipment meets the rule and should affirm that fact with the umpire-in-chief prior to the start of the ball game.

This new pad adds another alternative to the new chest/body protector rule. You now have three options: 1) a new traditional chest protector that protects the heart/cardiac silhouette and meets the NOCSAE performance standard; 2) a body protector (compression shirt with heart guard built into the shirt) that that protects the heart/cardiac silhouette and meets the NOCSAE performance standard under the traditional chest protector; 3) a chest pad that that protects the heart/cardiac silhouette and meets the NOCSAE performance standard that fits on top of the traditional chest protector. As we receive more information as to what these pads look like, we will share their images with you.

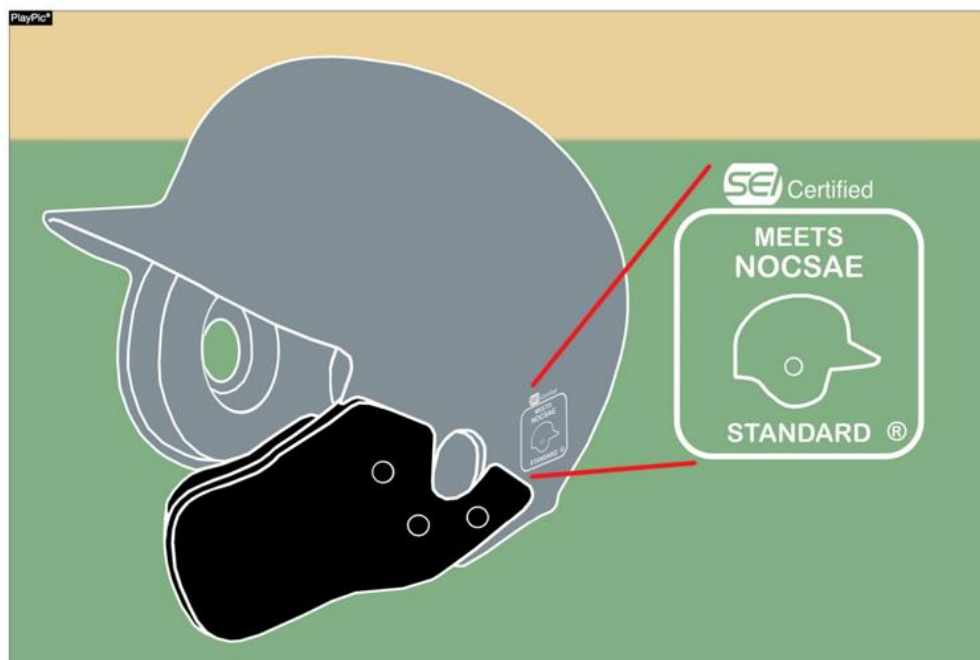
NOTE: Chest pads that meet the NOCSAE performance standard are not proprietary to a specific chest protector manufacturer. (ex. A Brodell brand chest pad can be worn on a Dolan brand chest protector. It is not specific to only a Brodell brand chest protector.)



# Catawba Umpires Association

Feb 28, 2021

## COMPLIANCE OF PLAYER EQUIPMENT



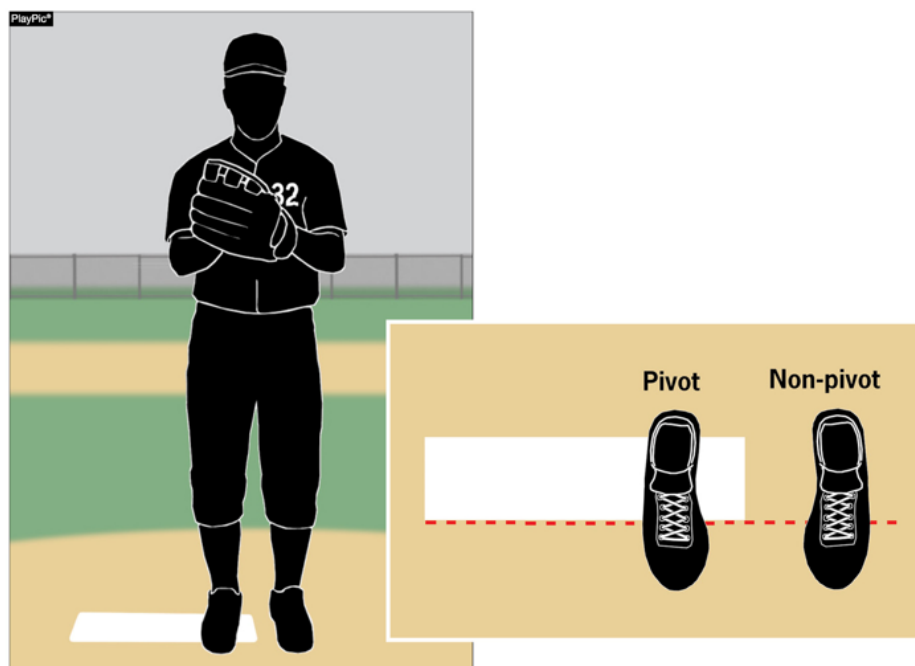
A face mask/guard specifically designed for a particular helmet model may be attached after manufacture, provided that procedure is approved by the manufacturer and meets the SEI/NOCSAE standard at the time of manufacture.



# Catawba Umpires Association

Feb 28, 2021

## PROPER PITCHING POSITIONS



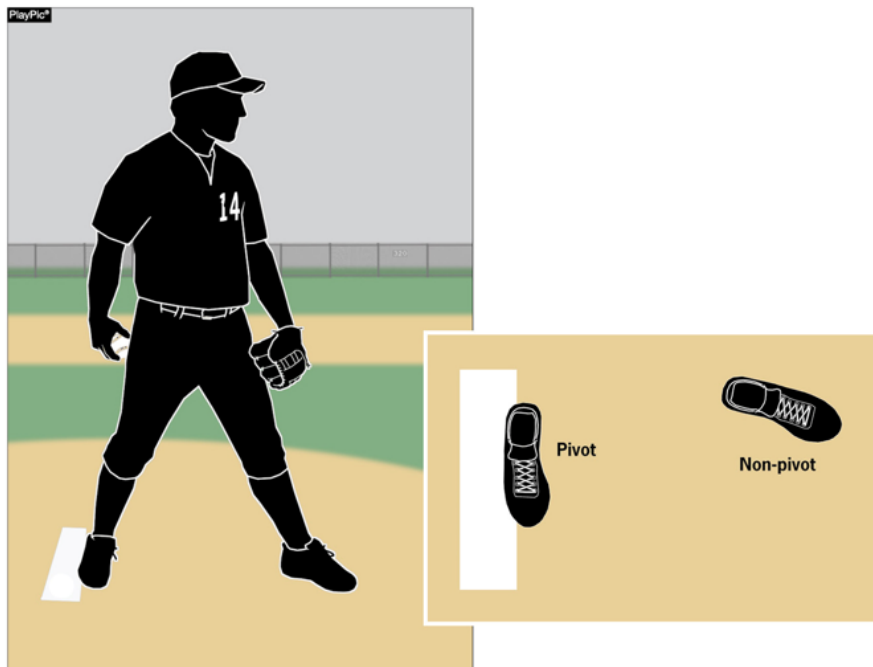
The windup is one of two legal pitching positions. For the windup, the pitcher's non-pivot foot shall be in any position on or behind a line extending through the front edge of the pitcher's plate.



# Catawba Umpires Association

Feb 28, 2021

## PROPER PITCHING POSITIONS



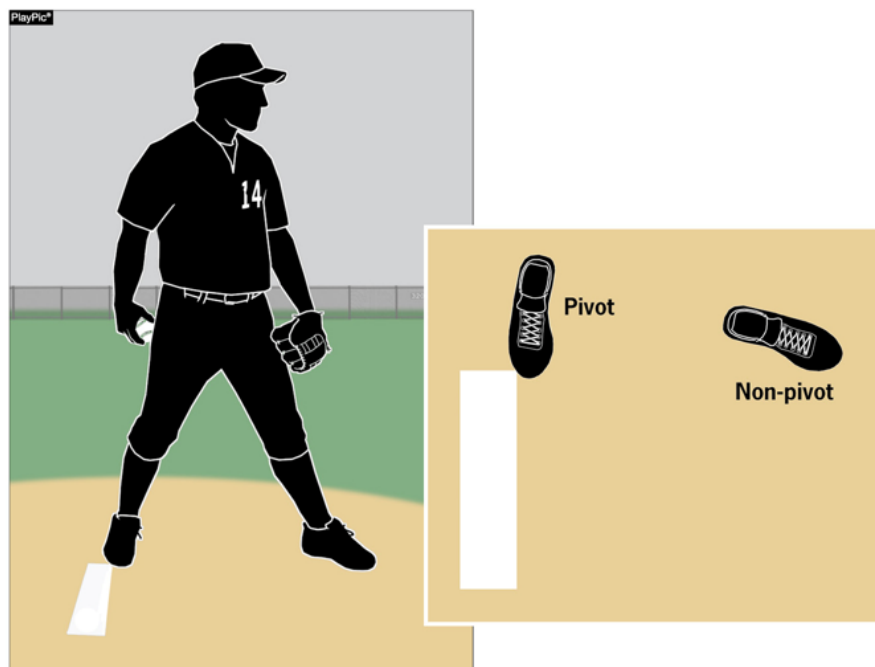
The set is one of two legal pitching positions. For the set position, a pitcher shall stand with his entire non-pivot foot in front of a line extending through the front edge of the pitcher's plate and with his pivot foot in contact with or directly in front of and parallel to the pitcher's plate.



# Catawba Umpires Association

Feb 28, 2021

## PROPER PITCHING POSITIONS



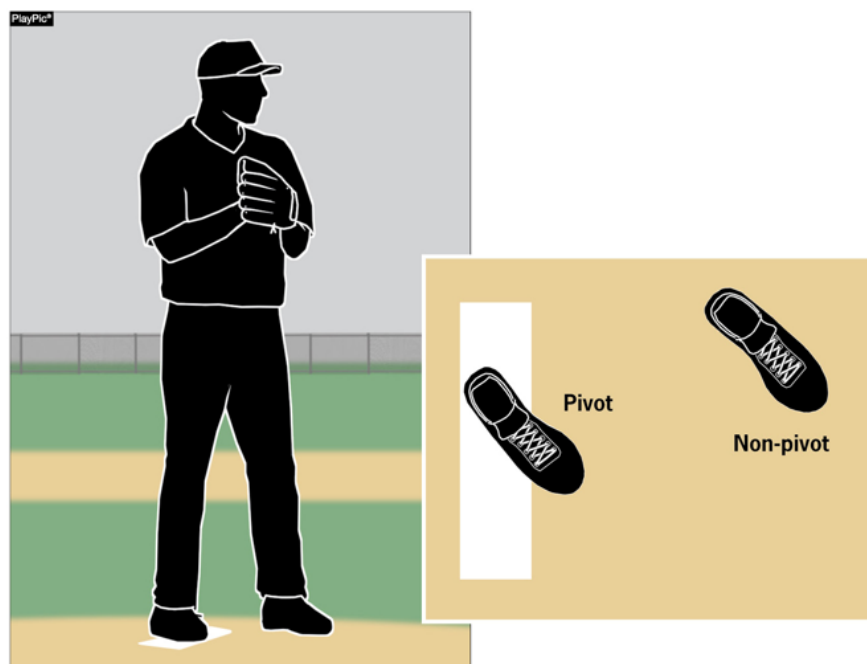
Pitchers are no longer required to have their entire pivot foot in contact with the pitcher's plate. This recognizes that many mounds are such that it is problematic for the pitcher to have his entire pivot foot in contact with the pitcher's plate.



# Catawba Umpires Association

Feb 28, 2021

## PROPER PITCHING POSITIONS



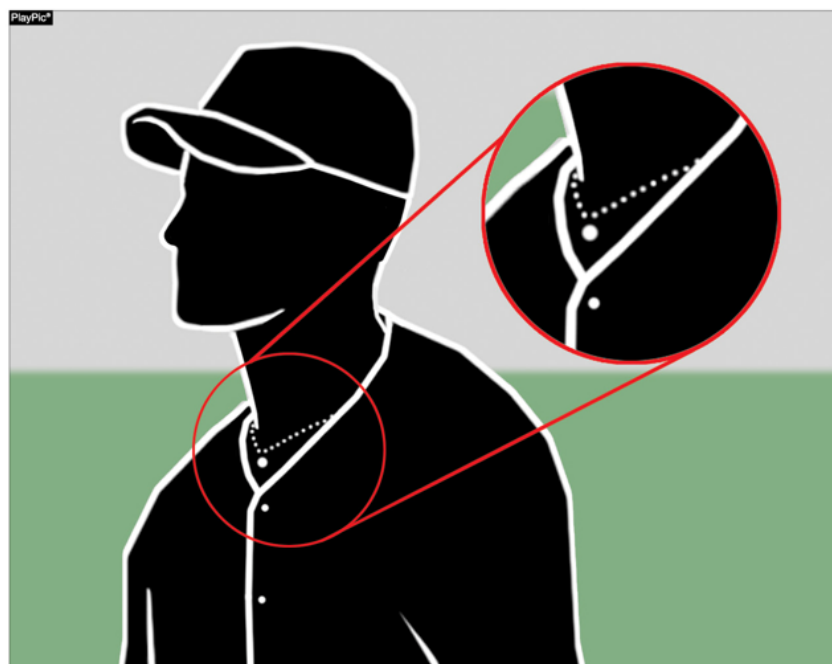
The so-called hybrid stance is illegal as it does not meet the requirements of either the windup or set positions.



# Catawba Umpires Association

Feb 28, 2021

## ENFORCEMENT OF nfhs JEWELRY RULE



Jewelry, including necklaces, bracelets and earrings, shall not be worn except for religious or medical medals. A religious medal must be taped and worn under the uniform. A medical alert must be taped and may be visible.



# Catawba Umpires Association

Feb 28, 2021

---

- Reminders:
  - National Anthem
    - Show Respect
    - Stand at Attention
    - Hats off, Right Hand Over Heart
    - No Exceptions
  - Game ends by run rule:
    - 15 After 3 Complete ( $2\frac{1}{2}$ )
    - 10 After 5 Complete ( $4\frac{1}{2}$ )



# Catawba Umpires Association

Feb 28, 2021

---

- Reminders: Please Inform Us
  - Association With Schools/Players/Coaches
    - Family Members on team
    - Family Members on school staff
    - Work at School
    - Etc.



# Catawba Umpires Association

Feb 28, 2021

---

## 2021 Catawba Umpires Booking Fees

- Group 1 Fee -\$0
  - Umpires who paid CUA High School Booking Fee in 2020 and worked zero or 1 paid games (High School, Legion, Fall League, Tournaments, etc.)
- Group 2 Fee -\$50 + \$10 Late Fee
  - Umpires who paid CUA High School Booking Fee in 2020 and worked 2 to 4 paid games (High School, Legion, Fall League, Tournaments, etc.)
- Group 3 Fee -\$75 + \$10 Late Fee
  - Umpires who paid CUA High School Booking Fee in 2020 and worked 5 or more paid games (High School, Legion, Fall League, Tournaments, etc.)
- Group 4 Fee -\$75 + \$10 Late Fee
  - Umpires who did not pay CUA High School Booking Fee in 2020